

Fire Evacuation Exercise

INSTRUCTIONS TO STUDENTS

18 March 2024

Mr. V S Rangen
HOD Student Management

Fire Evacuation Exercise



Objectives:

- To provide an orderly emergency response plan
- To ensure fast, organised and smooth evacuation of school buildings during emergencies
- To test the fire evacuation route and plan
- To account for all the students and personnel

Fire Evacuation Exercise



Emergency Response

Fire Evacuation Exercise

A prolonged ringing of the school fire alarm means there is a likelihood of fire in the school building

Refrain from talking and remain in your seat

You will receive the first announcement

- ▶ under investigation...
- ▶ stay calm
- ▶ do not step out of your class



Fire Evacuation Exercise

You will receive a second announcement with the outcome of the investigation of the fire alarm

- ▶ **Genuine fire situation**
- ▶ **Fire Evacuation Exercise**
- ▶ **False alarm or others**

***Location of the fire**



Fire Evacuation Exercise



In case of a

- ▶ genuine fire incident, or
- ▶ fire evacuation exercise...

Fire Evacuation Exercise

Once instructed by your subject teacher,

line up quickly and quietly outside your classroom.

Do it ...

- ▶ with urgency
- ▶ orderly manner



Fire Evacuation Exercise

Leave all your bags and belongings in the classroom including your handphone





Fire Evacuation Exercise

Inform your teacher if you notice

- classmate(s) not present in the class



Fire Evacuation Exercise

Once instructed, walk briskly in an orderly manner in the direction given on the fire evacuation route map



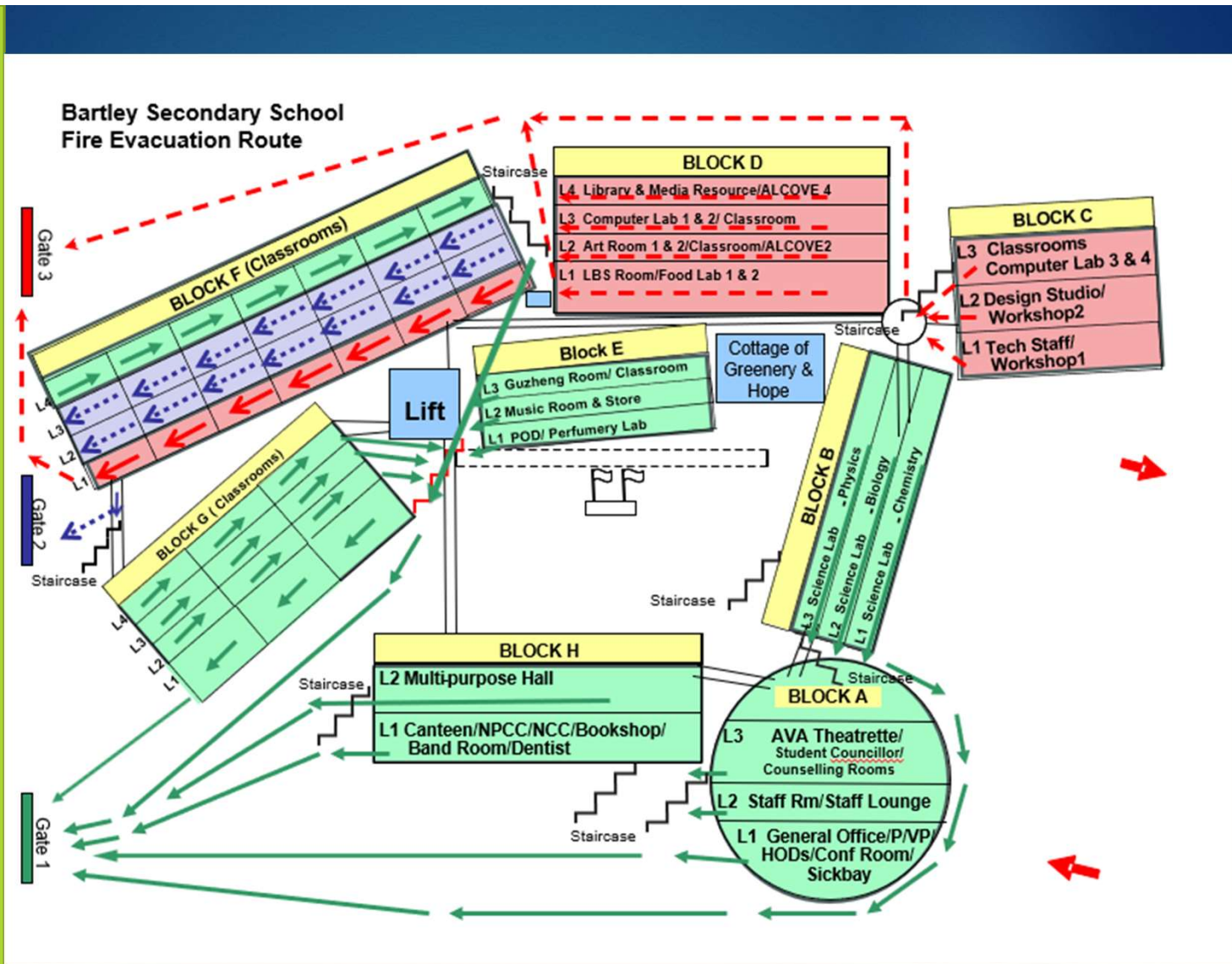
Fire Evacuation Exercise

Do not overtake, bunch up or push each other.

Fire Evacuation Exercise

- Green arrow markings will direct you to the school field FIRE ESCAPE GATE 1 and
- Blue arrows to FIRE ESCAPE GATE 2. The school field is the safe area.
- Red arrows to FIRE ESCAPE GATE 3. The school field is the safe area.

Safe Area (Field)



Fire Evacuation Exercise

Safe Area (Field)

- ▶ assemble facing the school building
- ▶ Class tags placed on the fence
- ▶ for attendance taking.

ASSEMBLE AWAY FROM THE SCHOOL BUILDING

SAFE AREA - SCHOOL FIELD

!	1	1	1	1	1	1	2	2	2	2	2	2	2	2	2	3	3	3	3	3	3	3	3	3	5	4	4	4	4	4	4	4	4	4	4
C	C	C	C	C	C	C	O	O	O	O	O	O	O	O	O	E	E	E	E	E	E	E	E	E	N	E	E	E	E	E	E	E	E	E	E
7	6	5	4	3	2	1	1	2	3	4	5	6	7	8	9	1	2	3	4	5	6	7	8	9	1	1	2	3	4	5	6	7	8	9	

Washing point



Fire Escape Gate 1



Fire Escape Gate 2



Fire Escape Gate 3

Fire Evacuation Exercise

Maintain strict discipline while
at the safe area.

Fire Evacuation Exercise

Remain at the safe area until further instructions are given.

Fire Evacuation Exercise

If you are not in the classroom at the time when evacuation signal is given,

**- GO TO THE SAFE AREA
IMMEDIATELY TO JOIN YOUR
CLASS**

Fire Evacuation Exercise

REFRAIN from USING the LIFT

- ▶ sudden power failure could trap you between floors
- ▶ lift door could open at the floor where the fire is located

Fire Evacuation Exercise

Points to take note:

- ▶ Stop your work immediately if you hear the prolong ringing of the alarm
- ▶ Listen to the first and second announcement
- ▶ If genuine fire situation, assemble outside the class quickly.
- ▶ Walk briskly and quietly to the safe area
- ▶ Assemble in the field and wait for further instructions

Advisory

Any person who knowingly gives or causes to be given a false alarm of fire shall be guilty of an offence and shall be liable on conviction to a fine not exceeding \$5,000 or to imprisonment for a term not exceeding 3 months or to both.



Fire Extinguisher



Manual Alarm Trigger



Fire Hose

Advisory

To ensure the school is a safe and conducive environment, do not bring the following items:

- ▶ Match sticks
- ▶ Lighter
- ▶ Flammable items like perfume, spray cans, nail polish remover, aerosol cans, lighter fluids
- ▶ Refrain from charging devices or gadgets in the classroom
- ▶ Switch off all appliances when not in use

- 
- Let us all play our part
 - Keeping the school a safe place

Thank you