



BARTLEY SECONDARY SCHOOL

The National Digital Literacy Programme

(NDLP) and

The Personal Learning Device (PLD)

Briefing

(8 Feb 2025)

F a c t a N o n V e r b a



BARTLEY SECONDARY SCHOOL

Sharing by PSG

Mr Garion Kong

F a c t a N o n V e r b a



BARTLEY SECONDARY SCHOOL

Briefing Overview

- Overview of NDLP and the PLD initiative
- Learning @ Bartley with Personal Learning Device
- Supporting Students in the Safe and Effective Use of Devices
- School Prescribed Device and Funding
- Next step to take

F a c t a N o n V e r b a



BARTLEY SECONDARY SCHOOL

National Digital Learning Programme (NDLP)

1. NDLP was launched in March 2020 to help students **strengthen their digital literacy and acquire digital skills** needed to navigate an increasingly digitalized world.

2. Under the NDLP, all secondary school students will **own a school-prescribed personal learning device (PLD)**. Students who are Singapore Citizens may use funds from their Edusave Account to pay for the PLD.

Intended Outcomes of a Personalised Learning Environment

The use of the personal learning device for teaching and learning aims to:



Support the Development of Digital Literacies



Support self-directed and collaborative learning



Enhance Teaching and Learning

F a c t a N o n V e r b a



BARTLEY SECONDARY SCHOOL

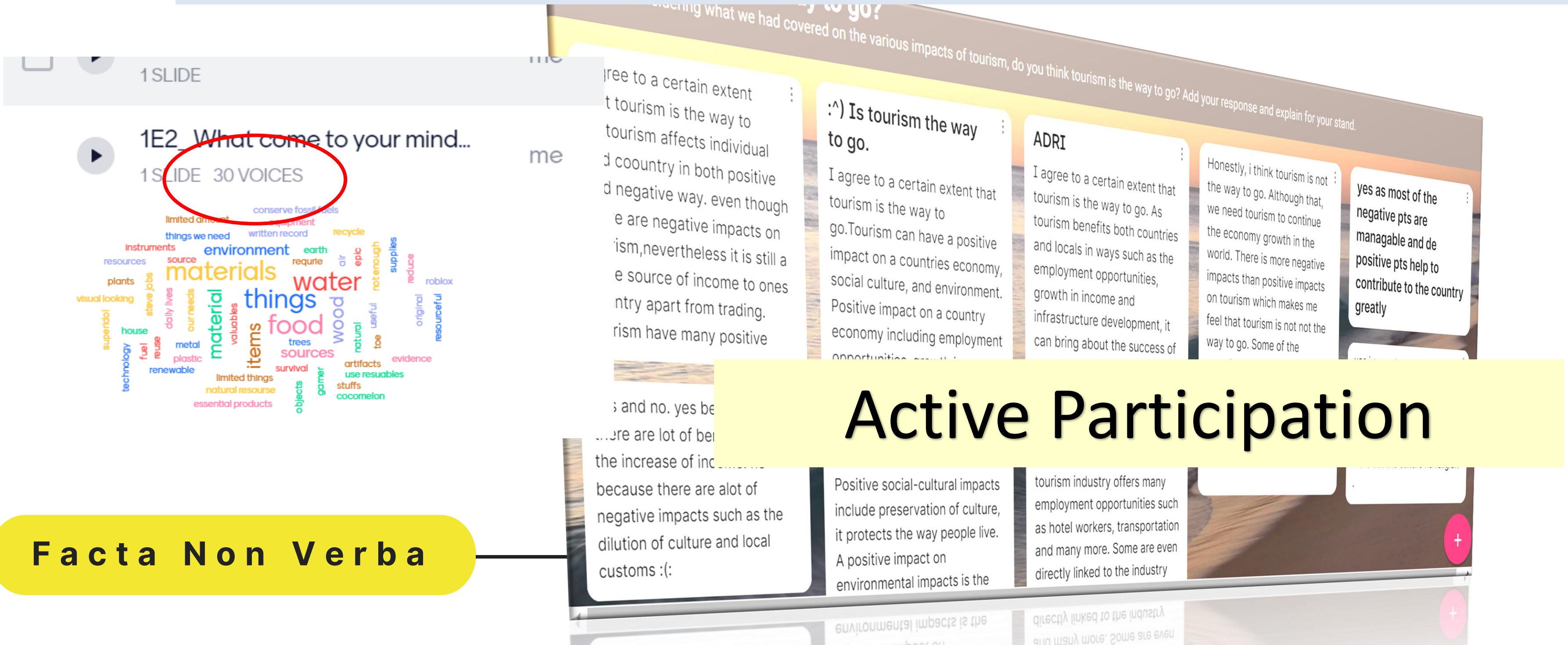
Learning @ Bartley Secondary with a Personal Learning Device

**Transforming the Culture of Learning
Preparing Students for the Future**

F a c t a N o n V e r b a

How does having a PLD supports your child's learning in Bartley?

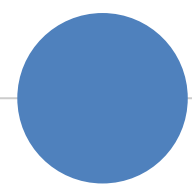
Supports your child to **learn actively** in class through a series of blended lessons with a mixture of online and face to face interaction.



Facta Non Verba

Active Participation

How does having a PLD supports your child's learning in Bartley?



Supports your child to **learn actively** in class through a series of blended lessons with a mixture of online and face to face interaction.



Collaborative learning



Today, 10:37

100% Total: 38 edits

Version history

All versions

TODAY

- 25 January, 10:37
 - Current version
 - Mei Yee Soh
 - Goh Qing Yang Edric (Bartleyss)
 - Lewis Goh Ying Jie (Bartleyss)
 - Elisea Cheng Rui See (Bartleyss)
 - Zechariah Jude Lee Tian (Bartleyss)
 - Ooi Qian Yun Eugena (Bartleyss)
 - Yang Kaijing Charmine (Bartleyss)
 - Carreon Emmanuel Denis (Bartleyss)
 - Maitri Tay Kwang Yu (Bartleyss)
 - Teng Yu Cheng (Bartleyss)
 - Kaithlynn Kaylie Liang (Bartleyss)
 - Goh Kay Woon (Bartleyss)
 - Tan Rui Heng (Bartleyss)

25 January, 10:16

- Mei Yee Soh

Show changes

Nature areas benefit people	People bringing benefits to nature	People bring disadvantages to nature	How nature may potentially bring about problems to people.
People going to parks for recreational activities. Humans depend on plants for oxygen just like how plants depend on	People can recreate the environment and place it around Singapore for better scenery/greenery. Take care of the environment	People feeding on stray animals Destruction of animal habitats, forcing them to move elsewhere Cutting down of trees for	May injure people (eg. falling trees, aggressive animals, insects that may cause diseases such as aedes mosquitoes)

How does having a PLD supports your child's learning in Bartley?

Supports your child to **learn actively** in class through a series of blended lessons with a mixture of online and face to face interaction.

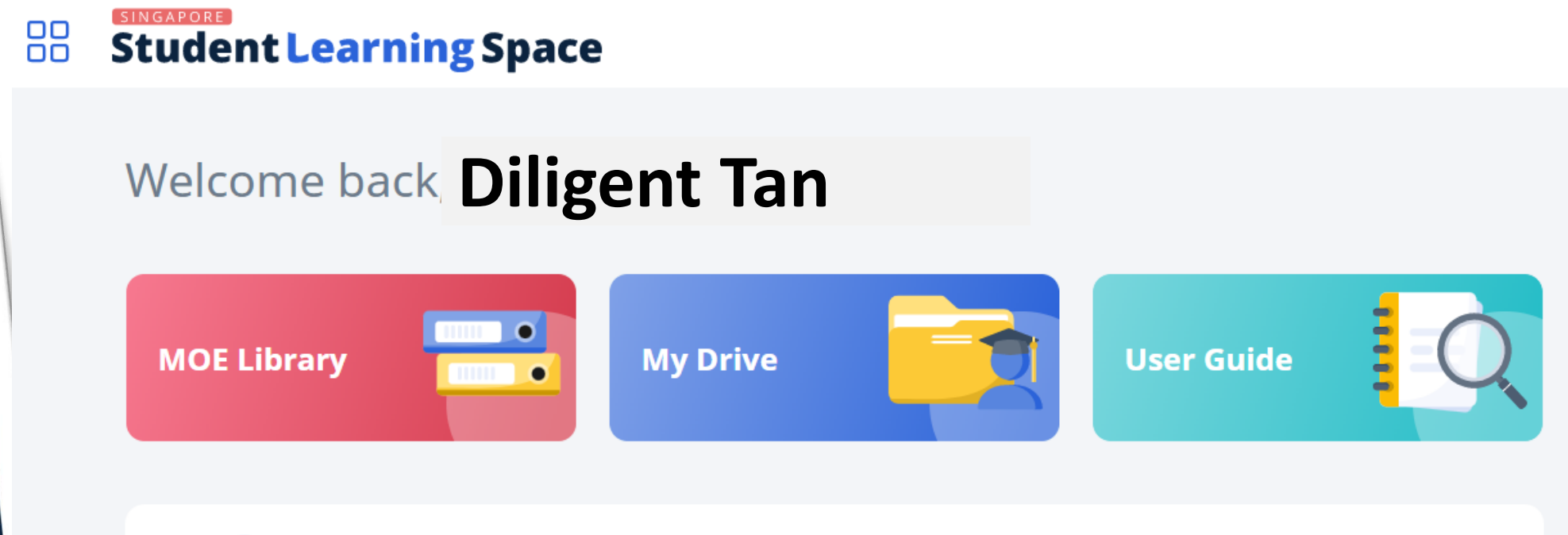
The screenshot displays a learning management system interface. At the top, a dark blue header reads "Assignment Info / Card Details" with a close button. Below this, a grey box contains the text: "Created on 18 Jan 2023 10:42 AM", "Last commented 19 Jan 2023 10:15 AM", and "forming a community garden". To the right, a "Comments (1)" section shows a comment from a student dated "19 Jan 2023 10:15 AM" which reads: "i think this is a great idea. Forming a commiunity garden will create an additional space of nature for people. Can you elaborate to suggest how by forming a community garden, will allow people to enjoy nature in a sustainable way?". Below the comments, a "Private comments" section shows a message from "Lee Guo Sheng" dated "Jan 19, 10:24 AM" which says: "The research done is good, and I appreciate the points that you have brought up. I will want to work with you on organizing your thoughts and your choice of sentences and words to bring greater clarity and impact to your writing. Good effort! I won't want to give you too much info for now, so I will get you to focus on the current comments first." Below the private comments is a text input field "Add private comment..." and a "Post" button. The background of the screenshot shows a document titled "Personal Research on Social Media (Learners for Life day 18 Jan 2023)" with various text blocks and a comment thread on the right side.

Receive timely & personalised feedback from teachers

Facta Non Verba

How does having a PLD supports your child's learning in Bartley?

● Encourage Self-Directed Learning



Class

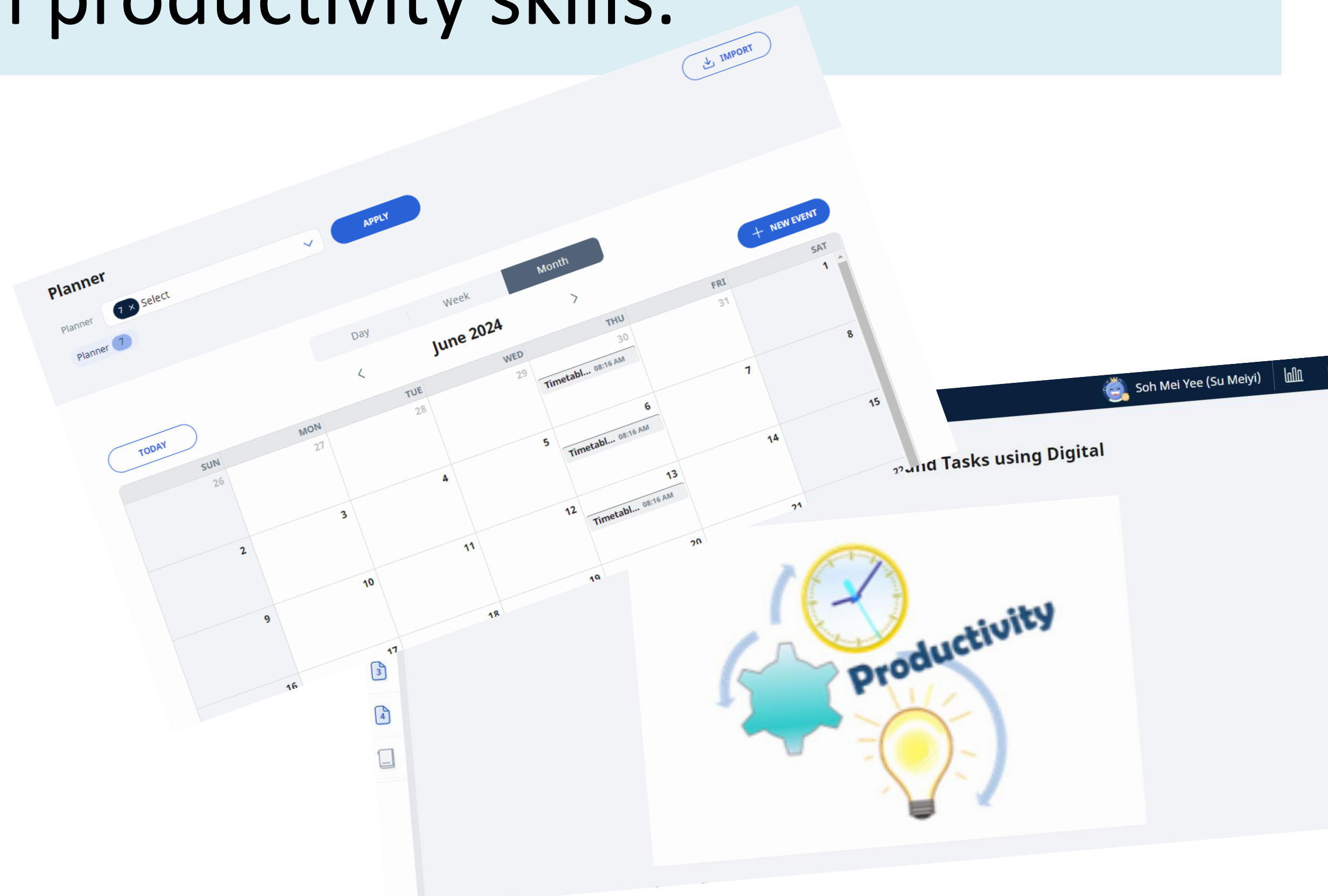
Review past lessons and access curriculum aligned resources curated by the teachers on the Singapore Student Learning Space (SLS) to enhance their own learning anytime.

Facta Non Verba

How does having a PLD supports your child's learning in Bartley?

● Develop digital productivity skills.

- Managing their schedule and tasks using digital tools
- Digital note making to organize learning
- Create digital products such as presentations.





BARTLEY SECONDARY SCHOOL

Supporting Students in the Safe and Effective Use of the Devices

F a c t a N o n V e r b a



BARTLEY SECONDARY SCHOOL

The school has measures in place to enable a safer digital environment for learning with the use of PLDs:



Classroom management and routines



Educating students on cyberwellness



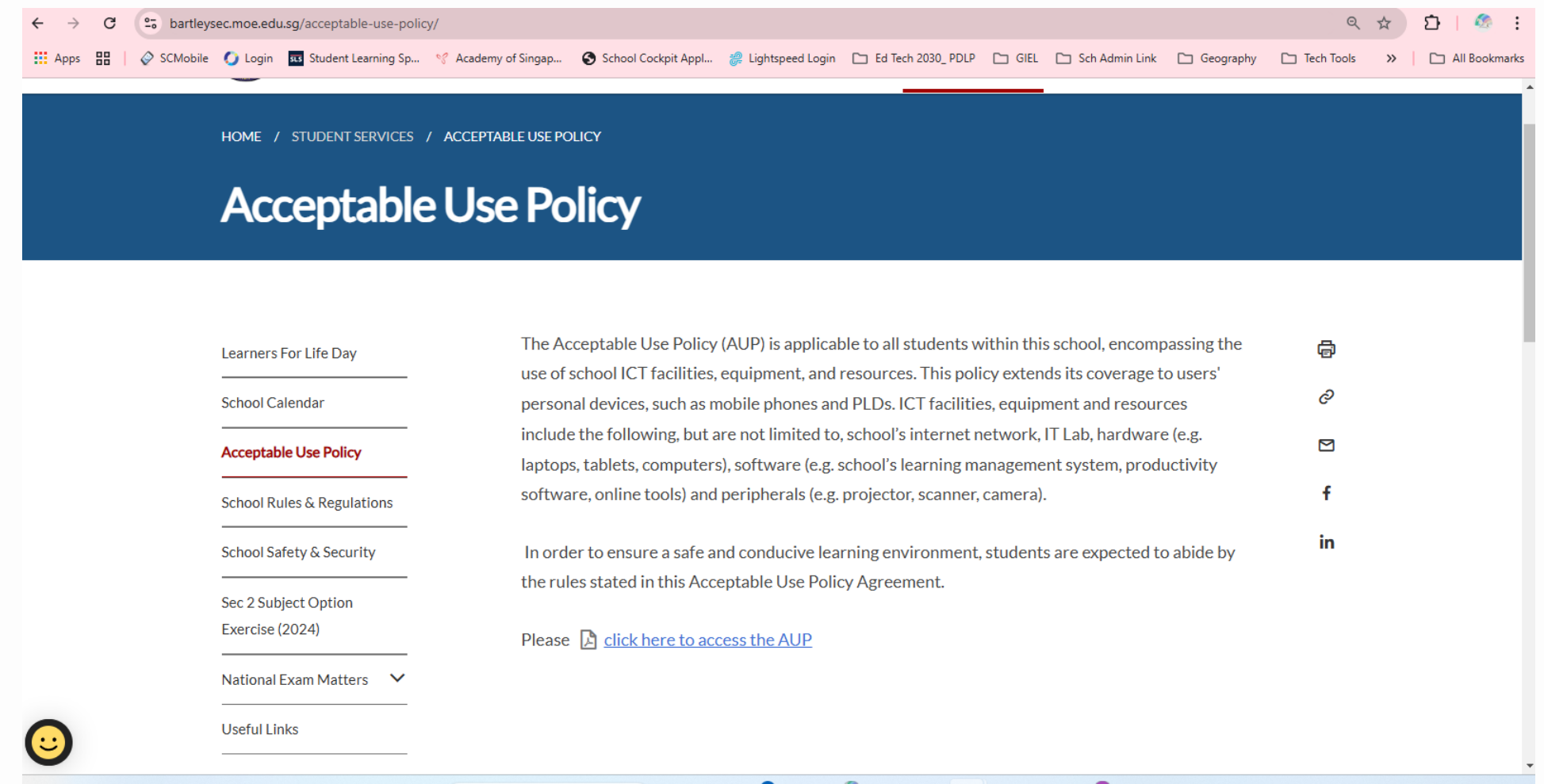
Partner with parents/guardians to ensure that students are well-supported in their use of technology for learning.



Installation of Device Management Application (DMA)

Classroom Management & Routines

- **Acceptable Use Policy (AUP):**
 - Found on the school's website:
Student Services > Acceptable Use Policy
 - Outlines **the expectations of device use to enable a conducive learning environment.**
 - It also **outlines the consequences** for violating the policy.
 - Parent/Guardian could refer to the AUP when helping to manage your child's/ward's use of the PLD.

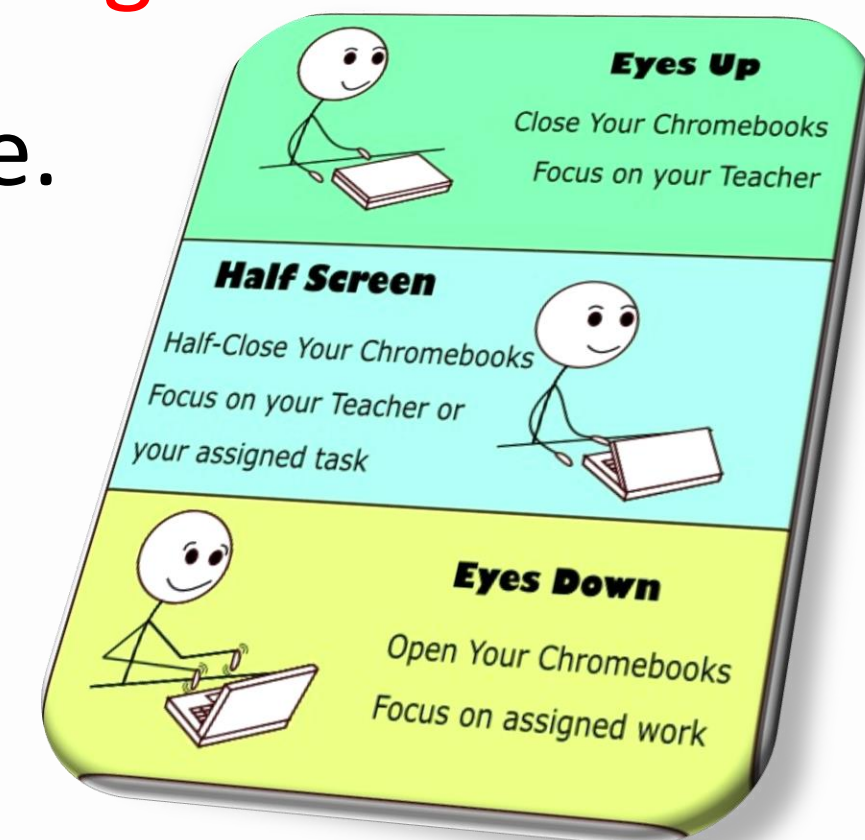




BARTLEY SECONDARY SCHOOL

Classroom Management & Routines

- All students are required to **bring their PLD to school in a fully charged condition everyday**. They should leave their PLD charger at home.
- Effective classroom management strategies by teachers.
 - Use of a common language when PLD is in use the class.
- Lock up PLD when not in use in the device locker provided.
- At the end of the day, students will bring their PLD home to charge.



Cyberwellness Education

- MOE has made significant changes to the Character and Citizenship Education. Cyber Wellness lessons will feature significantly in the CCE2021 lessons.

The broad topics covered in the Cyber Wellness lessons include:

- Cyber Use
- Cyber Identity
- Cyber Relationships
- Cyber Citizenship
- Cyber Ethics

Cyberwellness Education

Throughout their Secondary School education, students will learn about:

- Balanced use and self control
- Cyber bullying and Upstanding
- How to be a positive influence online
- How to handle online falsehoods
- How to manage social media (peer influence, emotions, echo chambers)
- Online relationship and Online safety (grooming, self disclosure)
- To respect intellectual property rights

Cyberwellness Education

In addition, schools also have various programmes such as assembly talks and sharing by student leaders on cyberwellness. Through the various programme, students will continue to learn to be **respectful, safe, and responsible users of technology.**



Cyberwellness Education

- We would like to **partner parent/guardian** to ensure that students are well supported in their use of technology for learning.
- As parent/guardian, you can also play a part.
 - ✓ **Model** good digital habits for your child/ward.
 - ✓ **Know** your child/ward well and **have conversations** with your child/ward about safe and responsible use of technology.
 - ✓ Set **ground rules** for internet use.
 - ✓ **Guide** your child/ward to use productivity tools using his/her PLD to organise information and simplify tasks for efficiency.

Role of the Device Management Application (DMA) in Providing a Safer Digital Environment for Learning

Device Management Application (DMA) Installation

- The Chromebook Device Management Application (DMA) solution, Lightspeed Systems[®], will be installed on all students' devices to provide a safe learning experience for students. The DMA will be funded by MOE.
- DMA will be installed during the collection of the device. Students will be guided on the installation when they receive their PLD.
- The DMA will be uninstalled from the device when students graduate or leave the school.

In School DMA Setting [Default]

Schools will determine DMA settings for **in-school use**.

- MOE and the school will set the *level of web content filtering*, including filtering out objectionable content or content that may not be conducive to teaching and learning (e.g. pornography, gambling, or websites containing extremist content)
- School hours is defined to be from **6a.m. to 6p.m.** and after school hours would be from **6p.m. – 11 p.m.** The device will **shut down at 11 p.m. by default.**
- The school will determine the apps and programs to be installed to support teaching and learning

After-School DMA Parent Options

1. After-School DMA Parent Options provide parents with the flexibility in managing your child's/ward's use of PLD after school hours.
2. The following tables outline the different levels of restrictions, controls, and monitoring for each After-School DMA Parent Option.

Default	Option A	Option B
<p>In-school DMA settings will continue after school hours</p>	<p>DMA settings can be modified by Parents/Guardians after school hours</p>	<p>DMA will be inactive* after school hours</p>
<p>For parents/guardians who want their child's/ward's use of the device to be restricted only to teaching and learning, and prefer to leave it to the school to decide on DMA settings after school hours.</p>	<p>For parents/guardians who prefer to take charge of the level of restrictions for their child's/ward's use of the device after school hours regulated by the DMA.</p>	<p>For parents/guardians who do not want their child's/ward's use of the device after school hours to be regulated by the DMA at all.</p>

*No data will be collected after school hours when the DMA is inactive.

- Having default school settings continue after school hours is the best option for parents/guardians who prefer not to, or do not feel ready to manage their child's/ward's device use on their own.
- Parents/guardians can request to change their choice of DMA settings, which is the existing practice.

After-School DMA Parent Options

	Default Setting (This will apply if no Alternative Setting is chosen)	Alternative Setting: Option A (DMA settings can be modified from the Default settings in place)	Alternative Setting: Option B (DMA will be inactive only after school hours)
Protect students from objectionable content	<p>Web content filtering will include, but not limited to the following categories:</p> <ul style="list-style-type: none"> • Violent/extremist content • Sexual/pornographic content • Gambling-related content 	<p>Parents/Guardians will be able to include additional web content filtering by submitting a request to the school.</p>	<p>No content filtering at all after school hours.</p>
Reduce distractions from learning through control of applications	<p>Parents/Guardians and students will be <u>unable</u> to install additional applications.</p>	<p>Parents/Guardians will be able to install additional applications by submitting a request to the school.</p> <p>Applications will be accessible both during and after school hours.</p>	<p>Parents/Guardians and/or students will be able to install additional applications after school hours.</p> <p>Applications installed by parents/guardians and/or students after school hours will not be accessible during school hours.</p>

After-School DMA Parent Options

	Default Setting (This will apply if no Alternative Setting is chosen)	Alternative Setting: Option A (DMA settings can be modified from the Default settings in place)	Alternative Setting: Option B (DMA will be inactive only after school hours)
Limit screen time	The school will define the specific hours during which the device is allowed to access the internet.	Parents/Guardians can: <ul style="list-style-type: none"> • modify the amount of screen time for their child/ward by submitting a request to the school*; • turn their child's/ward's web browsing on or off, controlling whether the PLD can access the internet; and • allow/disallow certain categories of web access. 	No control over screen time.

*Parents would have to choose from a range of pre-determined hours and submit their request to the school. Screen time limits set by the school will override parents'/guardians' settings during school hours.

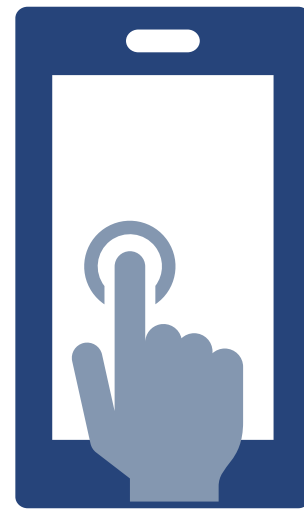
After-School DMA Parent Options

	Default Setting (This will apply if no Alternative Setting is chosen)	Alternative Setting: Option A (DMA settings can be modified from the Default settings in place)	Alternative Setting: Option B (DMA will be inactive only after school hours)
Monitor students' cyber activities	Parents/Guardians will <u>not</u> be able to track their child's/ward's browser history.	Parents/Guardians can track their child's/ward's browser history.	Parents/Guardians will <u>not</u> be able to monitor or control their child's/ward's use of the device through the DMA.
Provision of Parent Account	X	✓	X

Parents will be asked to choose their preferred After-School DMA Parent Options closer to the device collection date. No action needs to be taken for now.

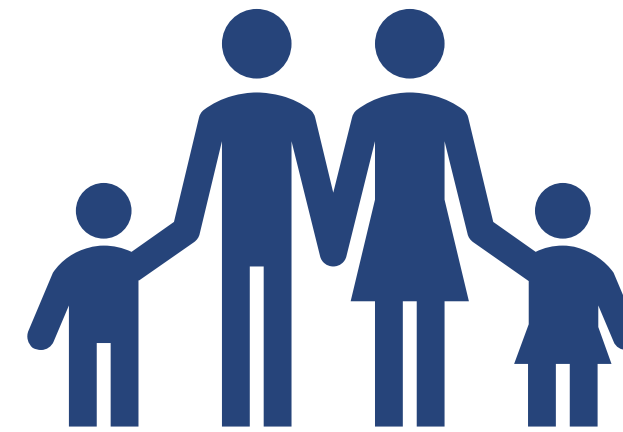
Support for Parents/Guardians

Parents/guardians may wish to consider the following questions to decide the After-School DMA Parent Option that best suits your child/ward.



A. Child's/ward's current device usage habits

- How much time does my child/ward spend on their device?
- How well is my child/ward able to regulate their device usage on their own?
- Does my child/ward get easily distracted while doing online learning?



B. Parents'/Guardians' involvement

- How confident and familiar am I with managing my child's/ward's cyber wellness?
- Are there existing routines and open conversations on the use of the Internet at home?
- Am I aware of how to prevent different types of cyber threats that my child/ward might face?

Supporting Resources

Parents/guardians play a crucial role in guiding your child/ward to use devices responsibly and safely. DMA complements your efforts in supporting your child/ward as they navigate the digital space. Here are some resources that you can refer to:

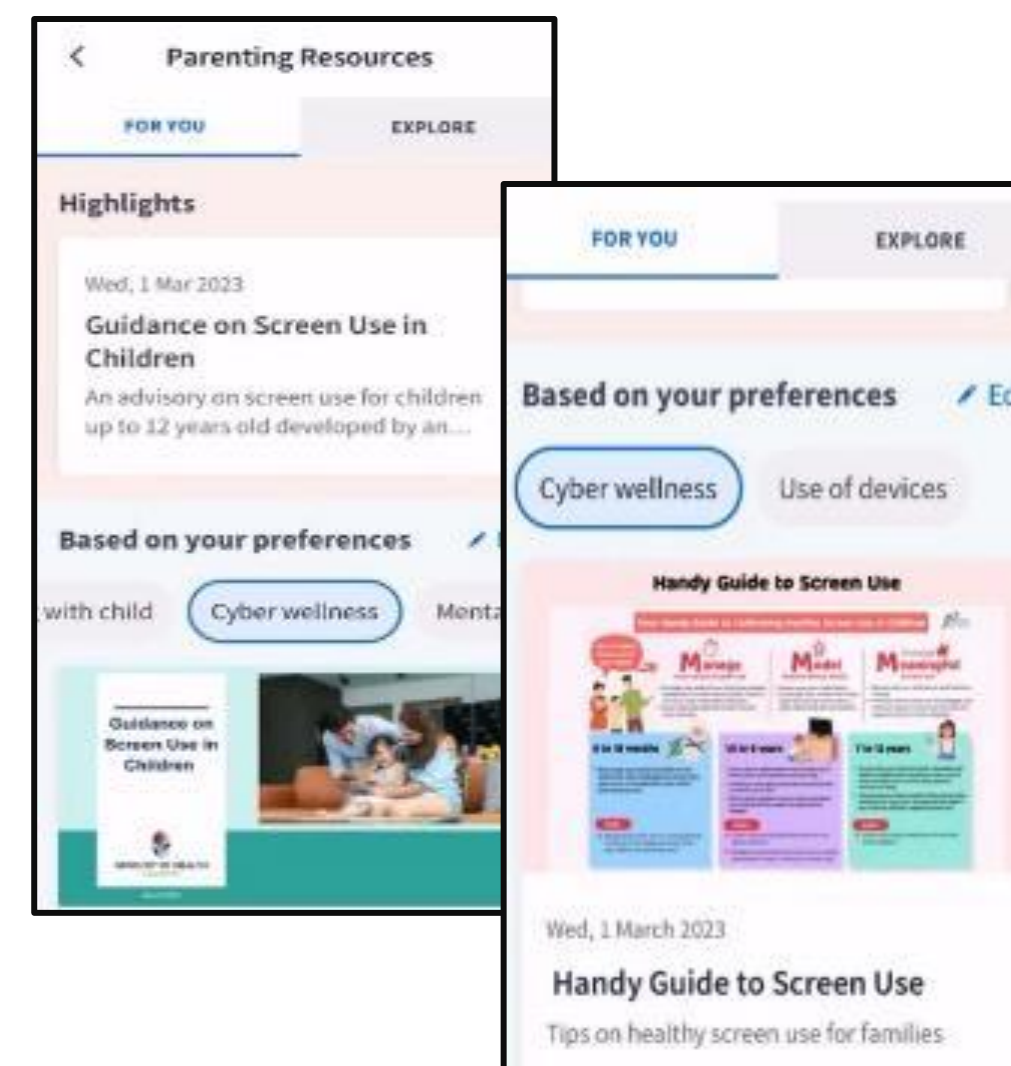
A. Parent Kit



B. Bite-size tips and advice via Parentingwith.MOEsg Instagram



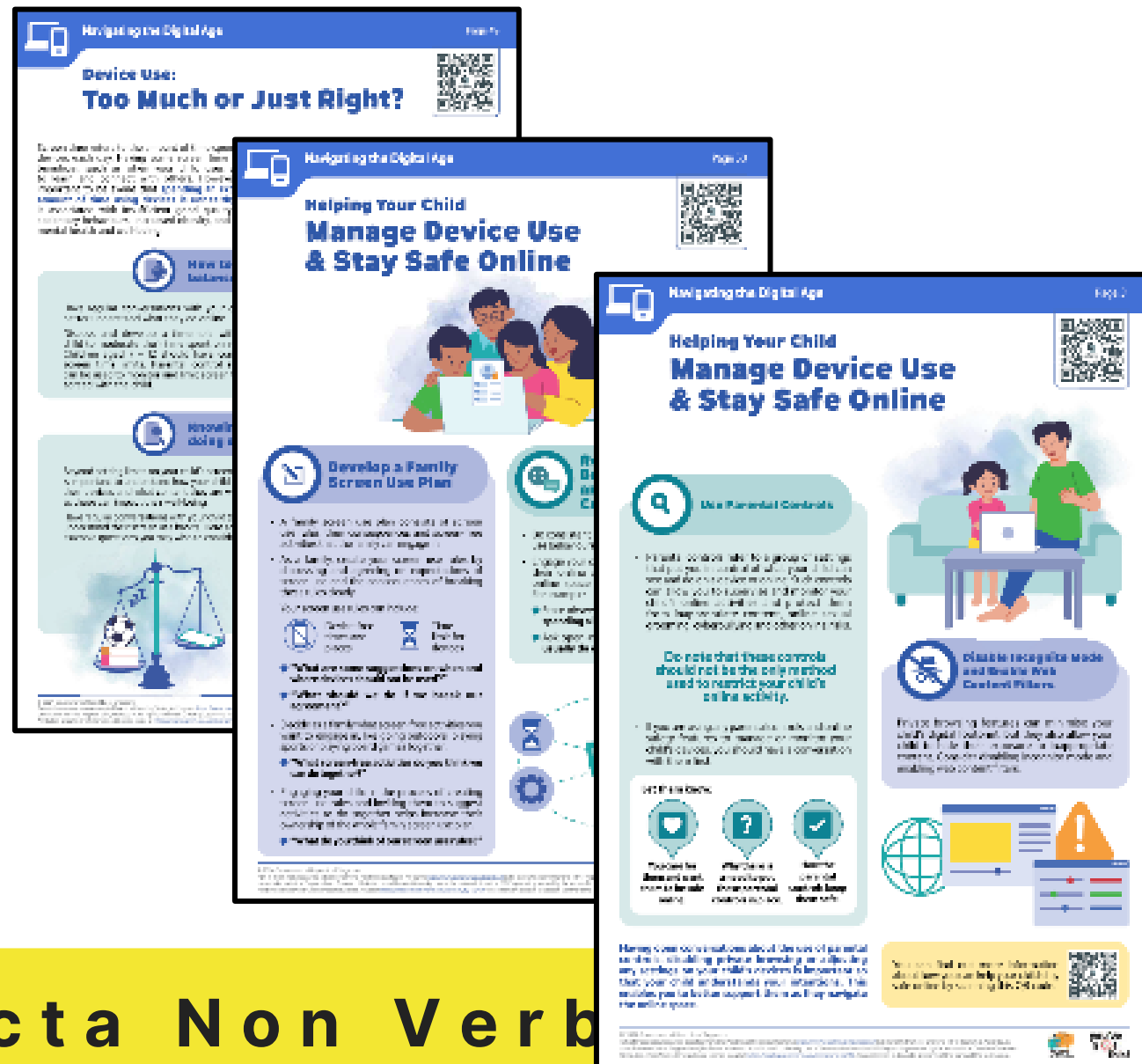
C. Resources from MOE and other agencies (available on resources repository in Parents Gateway)



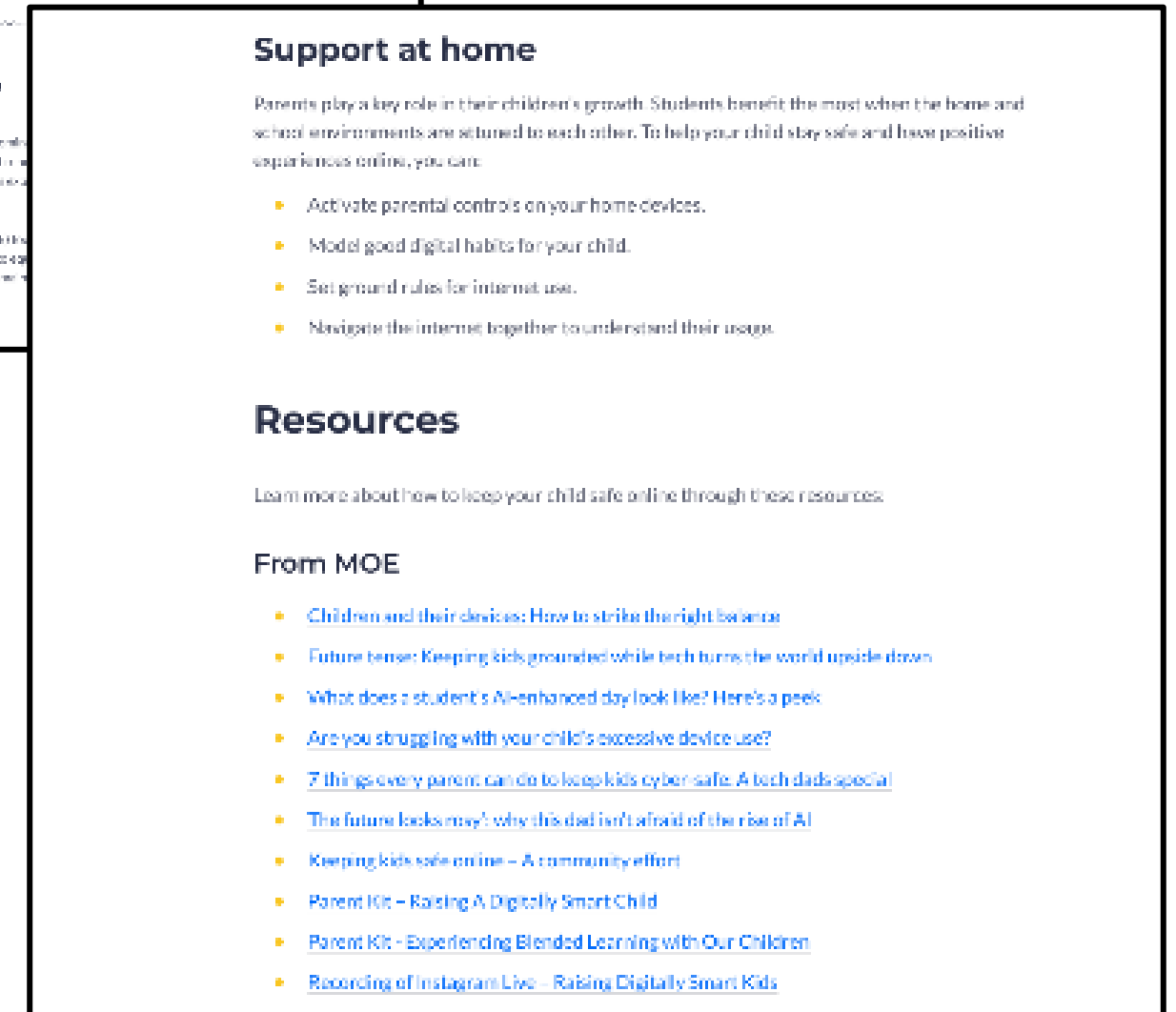
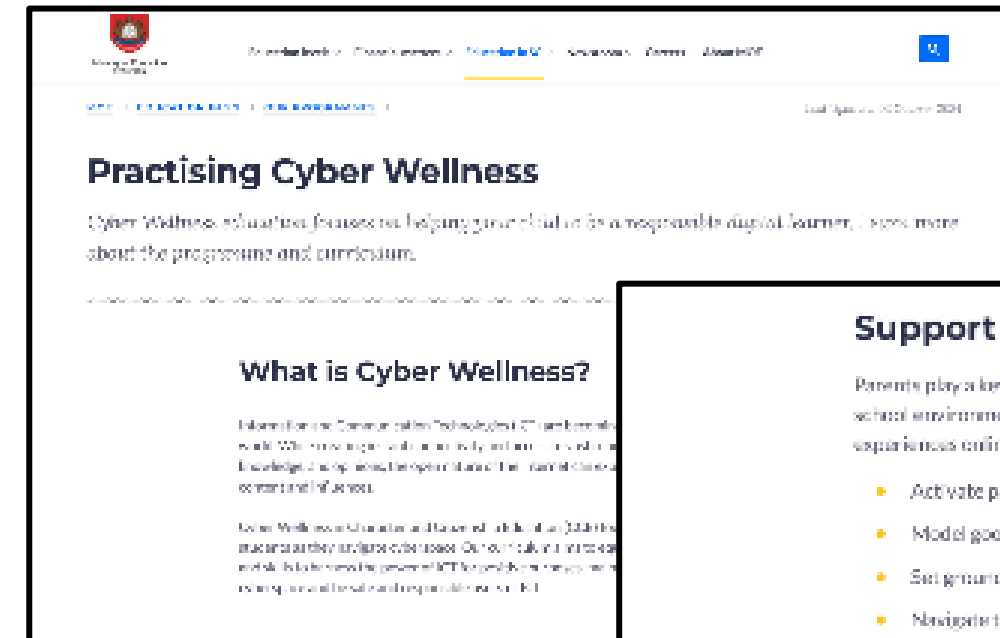
Supporting Resources

D. Parenting for Wellness Toolbox for Parents

The following extracted quick tips and strategies have been shared to you via Parents Gateway. Click on the pink header to download the full suite of resources of the Toolbox.



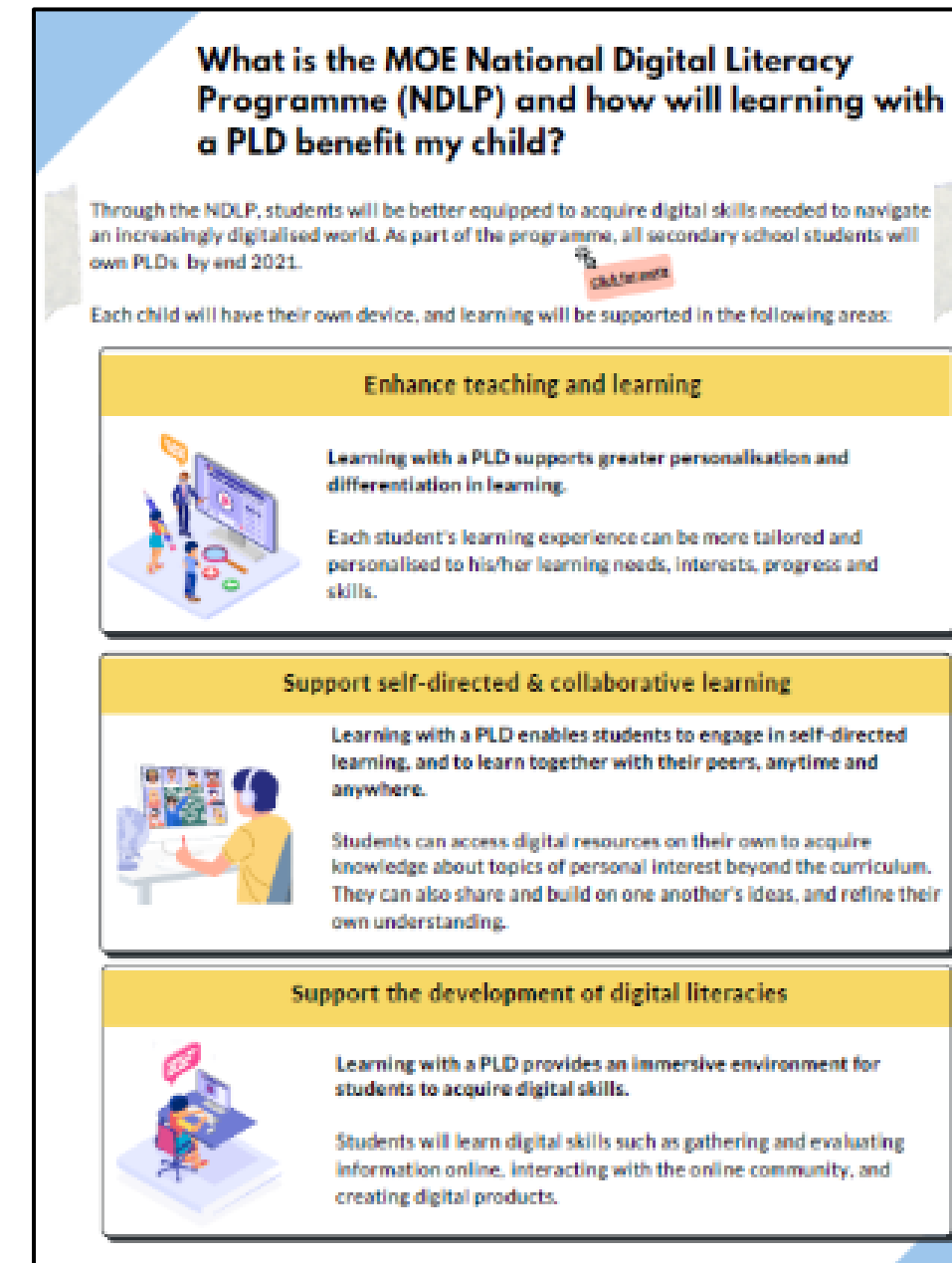
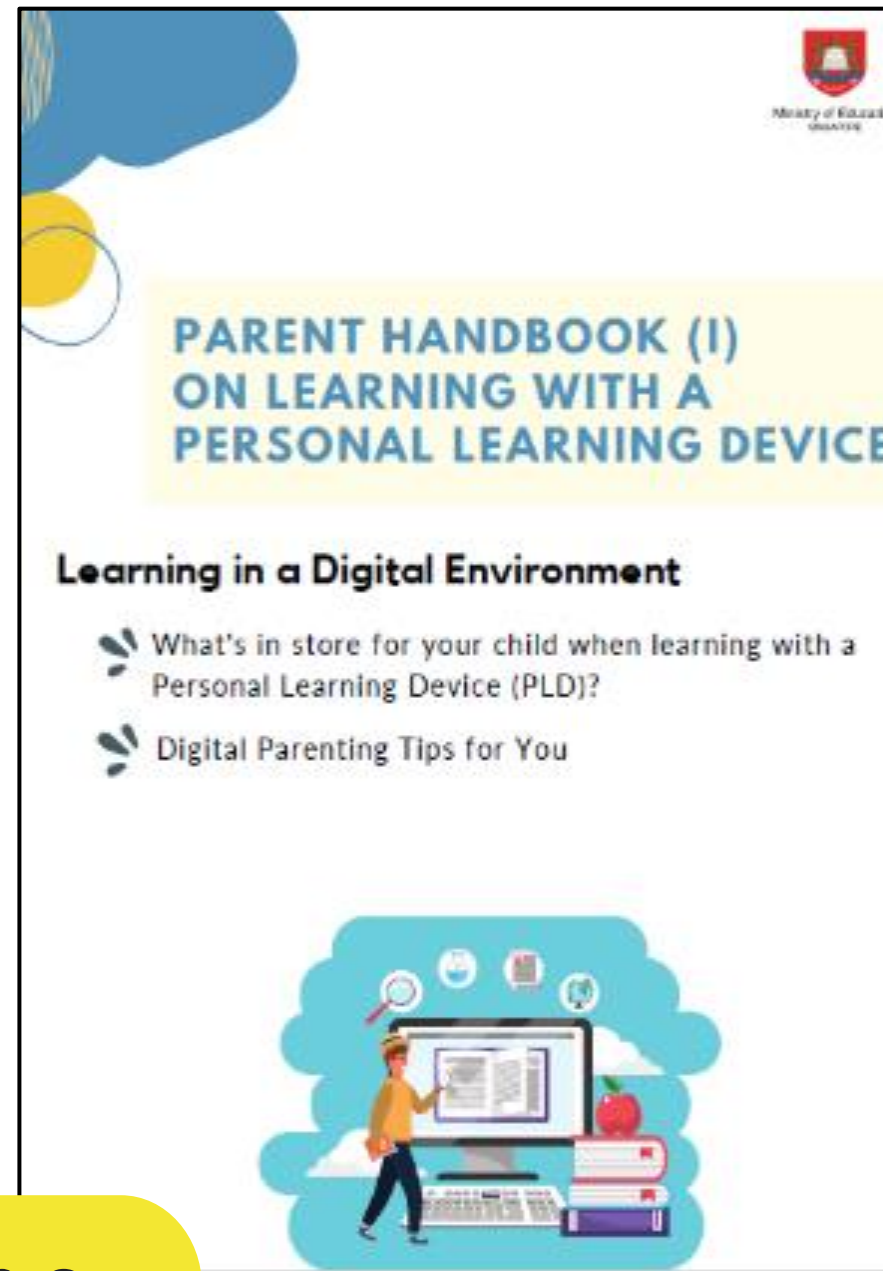
E. More resources are available via MOE Cyber Wellness Webpage



Supporting Resources

F. Parent Handbooks (I) and (II) on Learning with a Personal Learning Device

These Handbooks provide tips on supporting your child in the use of PLDs for learning and are shared via the PG notification together with the letter to purchase PLDs.



Data Collected By The DMA

1. The DMA does **NOT** collect any of the following data:

- Login IDs and passwords entered into websites or into any applications
- Actions performed (e.g. posts, online comments, items added to a shopping cart, etc.) when visiting websites and using apps
- Documents and photos stored in the PLDs
- PLD location
- Webcam videos and microphone recordings

Data Security

- All user data collected through the DMA will be stored in secure servers managed by appointed DMA Vendors with stringent access controls and audit trails implemented. The DMA solutions used are cloud-based Software-as-a-Service (SaaS) solutions and are trusted solutions that have been operating for many years. They have also been subject to regular security review and assessment by independent ³²reviewers.

Data Security

- DMA solutions have sufficient security robustness to ensure data collected are properly stored and protected. MOE will also subject the DMA Vendors to regular audit on the security of the system based on tender requirements.
- To prevent unauthorised access, DMA Administrators and DMA Vendors will be required to access their accounts using 2-factor authentication or the equivalent to ensure proper accountability for information access and other activities performed. There will be regular account reviews and audits for DMA Administrators' and DMA Vendors' accounts.



BARTLEY SECONDARY SCHOOL

Device & Funding Information

Facta Non Verba

Bartley Secondary School's Personal Learning Device



Intel N200 processor,
8GB RAM, 64GB Storage,

The school will be using the **Lenovo Chromebook Convertible 500e 4th Gen** for teaching and learning.

Total cost of the bundle includes 3-year warranty and 3-year insurance with GST is S\$587.50.

PLD Bundle

Device Bundle includes

- Lenovo 500e 11" 4th Gen Chromebook convertible
- Accessories - power adapter, wired mouse, carrying case and Lenovo Pen (Stylus)

Your child's/ward's PLD will come with the **Enhanced Device Bundle** which includes:

- 3-year warranty and
- 3-year insurance (which includes 2 repairs or 1 replacement claim)

Please note that the price of the PLD Bundle may appear to be higher than similar models on the retail market as the price of those devices usually does not include extended warranty and insurance coverage.

Insurance Coverage

Insurance Coverage	Claimable
<ul style="list-style-type: none">• Fire• Lightning• Power Surges• Accidental e.g water spillage, drop etc• Theft due to forcible entry• Robbery <p>* Accidental loss will not be covered by insurance.</p>	2 repairs or 1 replacement (3-year insurance)

Bartley Secondary School's Personal Learning Device



Intel Celeron N200 processor,
8GB RAM, 64GB Storage,

The school chose the device because of:

- Portability
- Durability (meets military specification testing)
- Teaching & Learning Affordances
 - Fast boot up time
 - Can last 10 hours on a fully charged battery
 - Touch screen & keyboard
 - Use of stylus for Inking function
 - Can be converted to tablet form and used during fieldwork
 - Built in Dual camera
 - Video recording
 - Chromebooks manage updates automatically, thus it always running the on latest and most secure version

Technical Support for Students' Devices

Students can seek help for the following issues during breaks and after school:

- Troubleshooting of device issues
- Solving connectivity problems
- Arranging collection of devices to be sent for repairs
- Typically, repairs take about 2 to 4 weeks. During this period, students can borrow a device from the school on a daily basis

Funding Support For Students Who are *Singapore Citizen (SC)*

- **The cost of the device bundle can be paid using your child's/ward's Edusave account**, after setting aside provision for payment of miscellaneous fees.
- To ensure the affordability of devices, MOE has provided Edusave top-ups of \$200 in 2020 to 2022, and \$300 in 2023, to all eligible Singaporean students in primary and secondary schools.
- This is on top of the annual \$290 credited into the Edusave account for Secondary School students and \$230 for Primary School students.

Funding Support For Students Who are Singapore Citizen (SC)

- For SC students who are on **MOE Financial Assistance Scheme** or whose family's monthly income meets the following criteria:

Gross Household Income (GHI) \leq \$3,000, or

Per Capita Income (PCI) \leq \$750

#PCI is GHI divided by the number of household members.

MOE will subsidise 50% of the device bundle cost or \$350, whichever is lower.

- The remaining amount will be payable from the students' Edusave account.
- If there is insufficient balance in the students' Edusave account for the remaining amount, school will provide additional subsidy so that the cash out-of-pocket (OOP) is \$0.

Funding Scenario: Student A (SC)

Student A (SC on MOE FAS) GHI ≤ \$3000 or PCI ≤ \$750	
Device Bundle Cost	\$587.50
Student Subsidy [50%]	\$293.80 (rounded up to nearest 10 cents)
Available Edusave Balance <i>(After setting aside for 2nd-tier misc fees)</i>	\$200.00 in edusave before deduction \$200.00 will be deducted
Additional Subsidy	\$93.70
Cash Out-of-pocket	\$0.00

Remaining
\$293.70 after
subsidy

For more details on financial assistance, please approach the school. **Each student would receive a personalised bill subsequently.**

Funding Support For Students Who are *Singapore Citizen (SC)*

- For SC students who are on **Non MOE-FAS** or whose family's monthly income is:

$\$3,000 < \text{Gross Household Income (GHI)} \leq \$4,400$, or

$\$750 < \text{Per Capita Income (PCI)} \leq \$1,100$

#PCI is GHI divided by the number of household members.

MOE will subsidise 30% of the device bundle cost or \$200, whichever is lower.

- The remaining amount will be payable from the students' Edusave account. If there is insufficient balance in the students' Edusave account for the remaining amount, school will provide additional subsidy so that the cash out-of-pocket (OOP) is not more than \$50.

Funding Scenario: Student B (SC)

Student B (Non MOE-FAS SC from lower income families) \$3000 < GHI ≤ \$4,400 or \$750 < PCI ≤ \$1100	
Device Bundle Cost	\$587.50
Student Subsidy [30%]	\$176.30 (rounded up to nearest 10 cents)
Available Edusave Balance <i>(After setting aside for 2nd-tier misc fees)</i>	\$200.00 in edusave before deduction \$200.00 will be deducted
Additional Subsidy	\$161.20
Cash Out-of-pocket	\$50.00 [max]

Remaining \$411.20 after subsidy

For more details on financial assistance, please approach the school. **Each student would receive a personalised bill subsequently.**

Funding Support For Students Who are *Singapore Citizen (SC)*

SC students whose family's monthly Gross Household Income (GHI) > \$4,400 or monthly Per Capita Income (PCI) > \$1,100, no subsidy will be provided. Parents/Guardians can use their child's/ward's Edusave or cash to defray the device bundle cost.

Funding Scenario: Student C (SC)

Student C (Not Eligible for Subsidy) GHI > \$4,400 or PCI > \$1,100	
Device Bundle Cost	\$587.50
Available Edusave Balance <i>(After setting aside for 2nd-tier misc fees)</i>	\$200.00 before deduction \$200.00 will be deducted
Cash Out-of-pocket	\$387.50

For more details on financial assistance, please approach the school. **Each student would receive a personalised bill subsequently.**

Funding Support For Non-Singapore Citizen (SC)

- Permanent residents (PR) and international students (IS) who need support could apply for subsidies, particularly those whose Gross Household Income (GHI) is below \$4400 or Per Capita Income (PCI)[#] is below \$1100.
- For more details, please approach the school.



BARTLEY SECONDARY SCHOOL

What's Next?

Facta Non Verba

Parental Consent for Procurement

1. Parents can access the **Parental Consent for the Purchase of Personal Learning Device (PLD)** via a Parents Gateway (PG) notification* that was sent to you on 21 January 2025.
2. Parents who want to use Edusave funds for the PLD (for Singapore Citizens students only), please submit the online Standing Order Form via this ⁴⁹ link:
<https://go.gov.sg/edusaveformsgso> by **12 Feb** if you have not done so previously.*

* Parents/Guardians without access to PG can request for the hardcopy letter via your child's/ward's form teacher.

What's Next

Time Frame	Activity
By 12 Feb 2025	<p>Submit:</p> <p>Consent to PLD purchase via in the PG notification which includes the following:</p> <ul style="list-style-type: none">• Intent to Purchase Personal Learning Device (PLD);• Authorisation Form for the Collection of PLD• the Standing Order (SO) for the use of Edusave Account via https://go.gov.sg/edusaveformsgso (for Singapore Citizen students only) if you have not done so previously.

What's Next

Time Frame	Activity
By 17 Feb	Application for subsidy Please get your child/ward to approach the General office for the form. Do ensure all required documents are submitted by 17th Feb. Application is subjected to approval.

Collection of Devices

- Subjected to stock availability, we are working towards the issuing of the laptops to the students by end of Term 2.
- Updates would be given via Parent Gateway.
- The default and most convenient mode of collection would be by students in the school. Please rest assure that they would be assisted by MOE ITD staff, vendor from AsiaPac as well as school Teachers.
- Onboarding on DMA would be done on the same day if the child collects the device.

Important Contacts/ Helplines

To access/find out more about...	Contact/Helpline
This deck of slides	School website
Edusave Balance	62600777
Financial assistance available	62889013

THANK YOU